

2014 Conference

Our previous conference held in 2014.

INVOLVE


National Institute for
Health Research

INVOLVE 2014: Changing Landscapes

An opportunity for people interested in public involvement in NHS, public health and social care research to meet, discuss and debate

26 and 27 November 2014

National Exhibition Centre, Birmingham

#INVOLVE2014

Facts and figures

Our **9th** biennial INVOLVE conference took place on **26** and **27** November **2014** at the National Exhibition Centre (NEC), Birmingham. It was our largest conference so far with:

- more than **530** delegates over **2** days
- **92** presentations and workshops offered within **5** parallel sessions
- **85** posters
- well over **1,700** tweets using the conference hashtag over the **2** days.

Thanks to all of the presenters, poster exhibitors, delegates and conference organisers for making INVOLVE 2014 such a success.

Thank you to everybody who attended the INVOLVE conference and helped to make it a success.

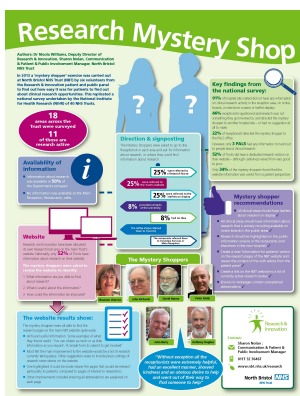
Congratulations to the winners of the INVOLVE 2014 poster competition:

The **overall winner** for design and plain English was:

Sharon Nolan

Communication and Patient and Public Involvement Manager

North Bristol NHS Trust



Highly commended for plain English was:

Liam Ennis

Institute of Psychiatry, Kings College, London



Highly commended for design was:

Rhianna Broadway

Norfolk and Suffolk NHS Foundation Trust



Find out about [previous INVOLVE conferences](#)

